



GPS2GO Instruction Manual

Version A.1

Installation and Setup

Prerequisites

Before you can install and use GPS2GO you must have CheckMate installed and setup correctly on your PC. For details on how to install CheckMate 5.1 and all its necessary components please refer to the GEOTAB forum. You can download CheckMate for free at checkmate.geotab.com

Mobile phone users will also have to install .NET Compact Framework 2, and .NET Compact Framework 2 Service Pack 1 onto your Windows Mobile device before you can run GPS2GO. To install this software simply download the .msi files the following location:

<http://www.geotab.com/Products/GOMobile/DownloadGoMobileTrial/tabid/91/Default.aspx>

To install these files, first run Microsoft ActiveSync, and then run the .msi file you've just downloaded. Follow the installation wizard to install the software onto your mobile phone.

Installing GPS2GO on a Mobile Phone

To install GPS2GO on a mobile phone simply download the .cab file from the following location:

<http://www.geotab.com/Products/GOMobile/DownloadGoMobileTrial/tabid/91/Default.aspx>

Copy the file to your Windows Mobile device and then open the file to install the program.

Installing GPS2GO for Notebooks

To install GPS2GO on a notebook download and run the GPS2GO.msi file available on our website at NO LINK YET.

Once setup is complete a GPS2GO icon should appear on your desktop. Double click the icon to run GPS2GO.

How to Configure GPS2GO for First Time Use

Configuring GPS2GO on your Mobile Phone

When you first launch the software on your mobile phone, you will be asked to register your phone number. The phone number of your mobile phone should automatically appear in the text field. If it does not, manually enter it and click OK. The format of the

number should be country code, area code, and telephone number with no dashed or spaces separating the numbers.

Ex. 14161234567

Click register and you will be given a four digit pin number. Write this pin number down in a safe place.

After you have registered your phone the next step is to configure GPS2GO to use the GPS antenna installed in your mobile phone. Refer to the documentation which came with your phone to determine the COM port your phone's GPS antenna uses. Once you have this information, click on Setup. In the Setup window, use the pull-down menu located beside GPS Port to select the COM port your GPS antenna is using.

Configuring GPS2GO on your Notebook

When you first launch GPS2GO on your notebook computer, you will be asked to enter your phone number. This unique 11 digit number will be used to identify and track your notebook while GPS2GO is running. Enter your country code, area code, and telephone number into text box without any dashes or spaces.

Ex. 14161234567

Click register and you will be given a four digit pin number. Write this pin number down in a safe place.

Once you register your device you will get a message saying "GPS not configured properly".

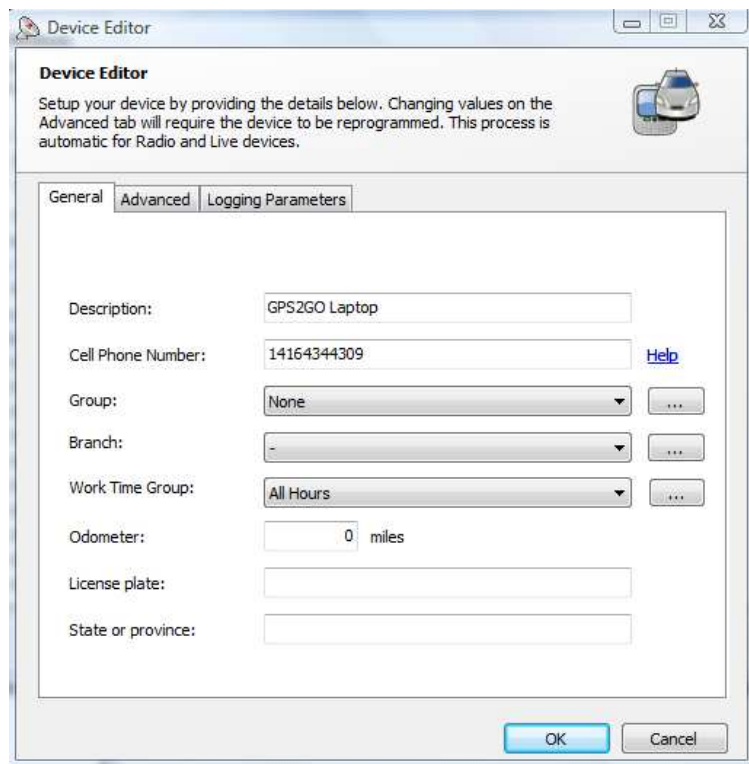


You must have a GPS antenna linked to a COM port on your notebook before you can run GPS2GO. To setup GPS on your notebook, refer to the documentation which came with your notebook or third party GPS antenna.

To configure GPS2GO click on Setup. In the Setup window, use the pull-down menu located beside GPS Port to select the COM port your GPS antenna is using.

Configuring Your GPS2GO Devices in CheckMate

To setup your GPS2GO devices in CheckMate you must first add the devices to the database. To add a device click setup->devices->add and select “GPS2GO (mobile device)”. Click OK and the following window will be displayed.



The screenshot shows the 'Device Editor' window with the following fields and values:

- Description: GPS2GO Laptop
- Cell Phone Number: 14164344309
- Group: None
- Branch: -
- Work Time Group: All Hours
- Odometer: 0 miles
- License plate: (empty)
- State or province: (empty)

Buttons: OK, Cancel

Type in a description of the device, and the phone number you registered in the GPS2GO program. When you click OK you will be prompted to type in the PIN number which was provided to you when you registered. Type in this PIN and click OK.

Clicking on the Advanced tab will give you the option to increase/decrease the max log time. Increasing the max log time will decrease battery consumption, but will make stop times less accurate.

In order to track your GPS2GO devices in CheckMate you must enable GPS2GO Live Download. Click on Setup->Options and select the Services tab. Check the box beside the option Enable GPS2GO Live Download.

Setting GPS2GO Options in CheckMate

Your GPS2GO user interface can be configured from within CheckMate. Interfaces can be configured only for device groups, not individual devices. To create a GPS2GO device group in CheckMate, go to Setup->Device Groups and click Add. Check the box marked Enable this group for GPS2GO devices. If this is done correctly the following window will be displayed.

Device Group

Use device groups to group similar device or vehicle types. For example, Sales or Light Commercial Vehicles. Device grouping is applied regardless of branch, region or division.

Group Name:

Enable this group for GPS2Go devices

GPS2Go Options

<input checked="" type="checkbox"/> Button 1 <input type="text" value="EMERGENCY"/>	<input checked="" type="checkbox"/> Button 2 <input type="text" value="At Customer"/>
<input type="radio"/> Standard Button	<input type="radio"/> Standard Button
<input type="radio"/> Toggle Button	<input checked="" type="radio"/> Toggle Button
<input checked="" type="checkbox"/> Button 3 <input type="text" value="At Lunch"/>	<input checked="" type="checkbox"/> Button 4 <input type="text" value="In Traffic"/>
<input type="radio"/> Standard Button	<input type="radio"/> Standard Button
<input checked="" type="radio"/> Toggle Button	<input checked="" type="radio"/> Toggle Button

User is allowed to turn off tracking

GPS2Go Preview

Click on the buttons for a preview of how they would appear on the device.

<input type="text" value="EMERGENCY"/>	<input type="text" value="At Customer"/>
<input type="text" value="At Lunch"/>	<input type="text" value="In Traffic"/>

Batch this number of logs:

Seconds before speed warning:

Min. Secs. before Upload:

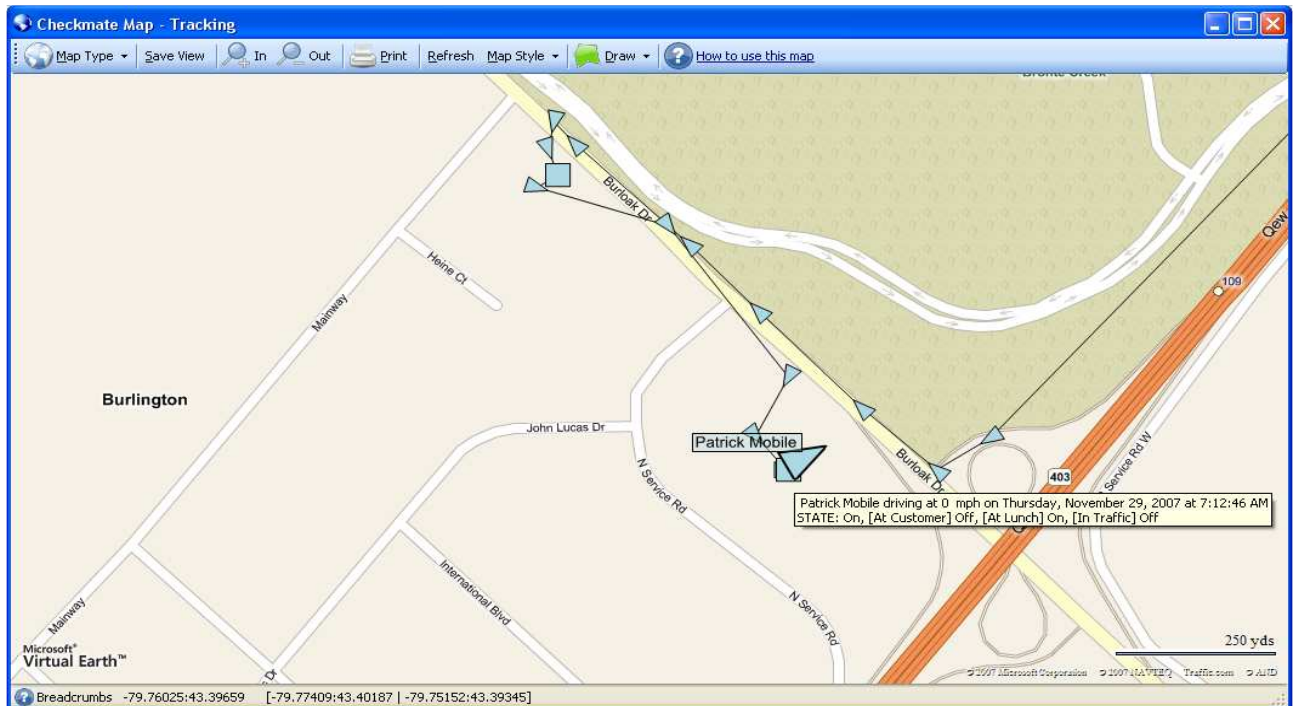
OK Cancel

The GPS2GO user interface consist of four customizable buttons. Each button can be given a unique name, and can be setup to be a toggle button or a standard click once button.

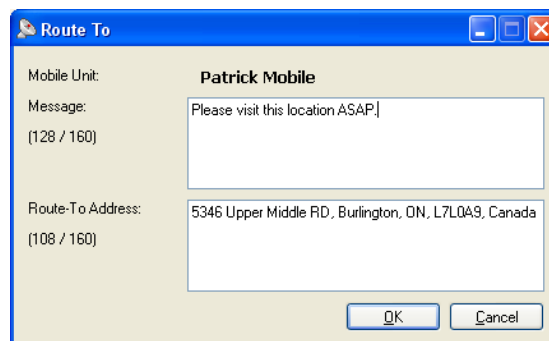
CheckMate includes options to limit the number of times data is sent to the store and forward during a trip. These options are “Batch this number of logs” and “Min Secs. Before Upload”. The batch option will prevent the unit from transmitting data until a minimum number of logs has been recorded since the last transmission. The minimum seconds option prevents the unit from transmitting until the set amount of time has elapsed since the last transmission. These options can be set to decrease data costs, and increase battery consumption.

Using Your GPS2GO Device

GPS2GO is designed with many unique features that enable the user to easily track, and communicate dispatch instructions to drivers. To track a device in CheckMate, from the main window click on Track, and select the device you wish to view. If the device is currently out in the field, select View Most Recent to obtain the last known position of the vehicle. Move your mouse over the current vehicle position to obtain information on the vehicle's speed and button status



To dispatch a vehicle to a location on the map, right click the desired location on the map and select Find Address. Next, right click on the current location of the vehicle and select Device->Send Message/Address. If done correctly the following window should appear:



Click OK to send the message and the address to the mobile device. Once the message is sent, the driver can obtain directions to the address by selecting Map->Get Directions.